

Phil Technologies (P) Limited

Radium Box

**Step by Step Morpheo MSO 1300 e3 L1 Drivers Installation
(Complete Guide | Windows)**



****For easy RD installation & accessible for common people.**

+91 84343 84343 | mail@radiumbox.com
radiumbox.com

How To Download Morpho MSO 1300 e3 L1 Drivers Installation?

What is Morpho MSO 1300 e3 L1 ?

The MSO 1300 E series was developed with an emphasis on portability and affordability without compromising the accuracy of fingerprint collection. These small USB sensors offer a dependable, practical, and affordable option for enrollment, identity verification, and user identification. Information is fully safeguarded by their match-on-device (up to 1:10,000 users) or match-on-card functionalities, which are supplemented with different security measures.

Compact yet highly-secure, reliable fingerprint scanner that offers one-stop solution in biometric and security industry. RD Service set-up Morpho MSO 1300 E3 manual is also available for easy installation , for both Windows and Android platform support. In this manuals you will find detailed steps to install RD Service for CSC, banking and many more Aadhaar Apps.

Requisites for Morpho Drivers :

Required OS

- Windows 10 & above

Required Driver Setup

- Windows version- 2.0.1.62

Prerequisite Software Installed Automatically

- **Web Browser** : Chrome (Minimum version 60), Mozilla Firefox (Minimum version v56.0), and Edge

Ensure All Prerequisites are Installed Before Running the Application

RD service renewal is compulsory before following the below steps , so kindly apply by using below link:

<https://www.radiumbox.com/rd-service/online-register-biometric-device>



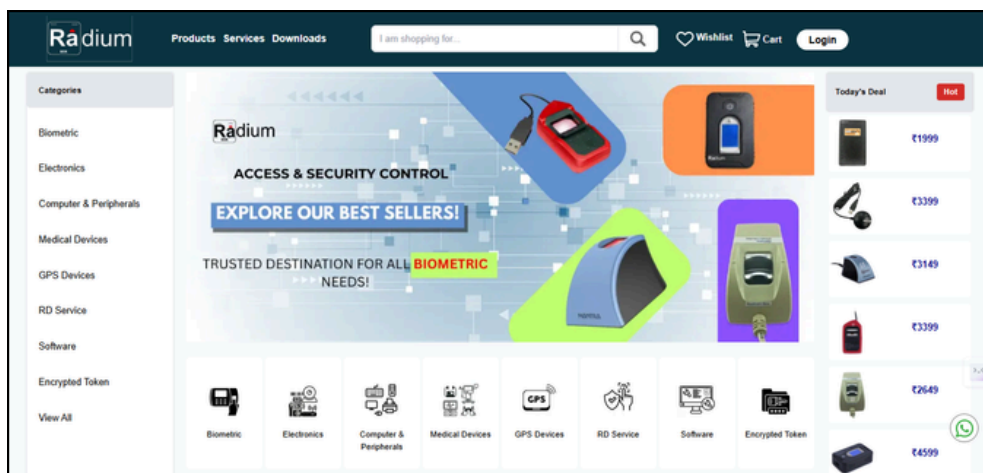
IDEMIA
augmented identity



Steps for Downloading Morpho MSO 1300 e3 L1 Drivers Installation:

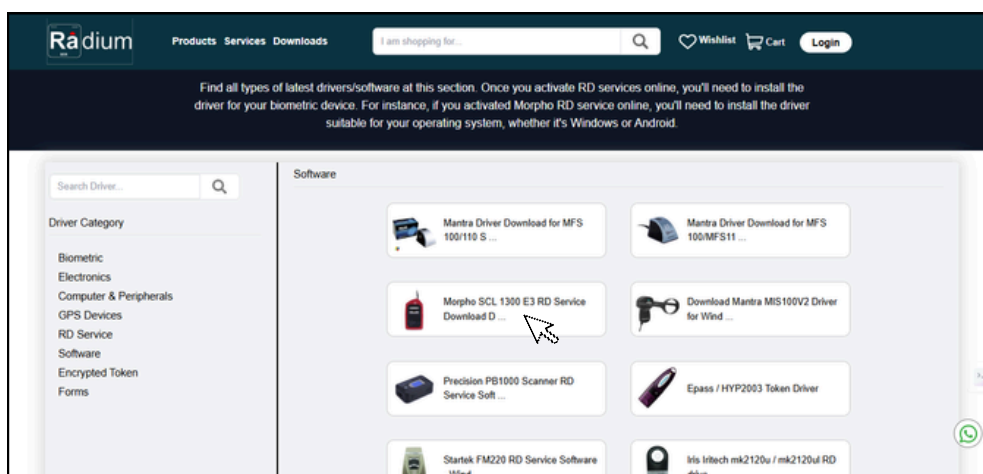
Step 1: RD Service setup for Morpho MSO 1300 e3 L1 is available on our official website. Download Morpho MSO 1300 e3 L1 Driver by visiting the following link:

<https://www.radiumbox.com/>

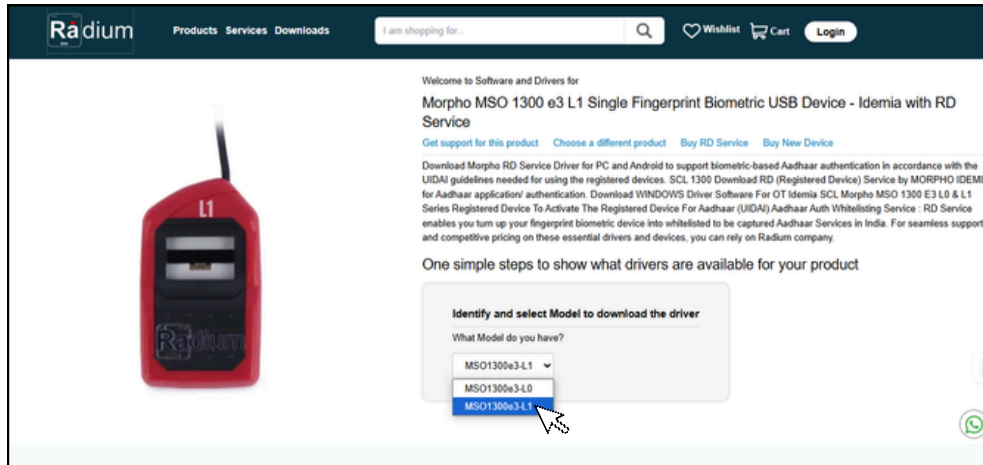


Step 2: After visiting our official website, click on the Download option that appears at the top of the home page. In the Download page, click on the Morpho MSO 1300 e3 L1.

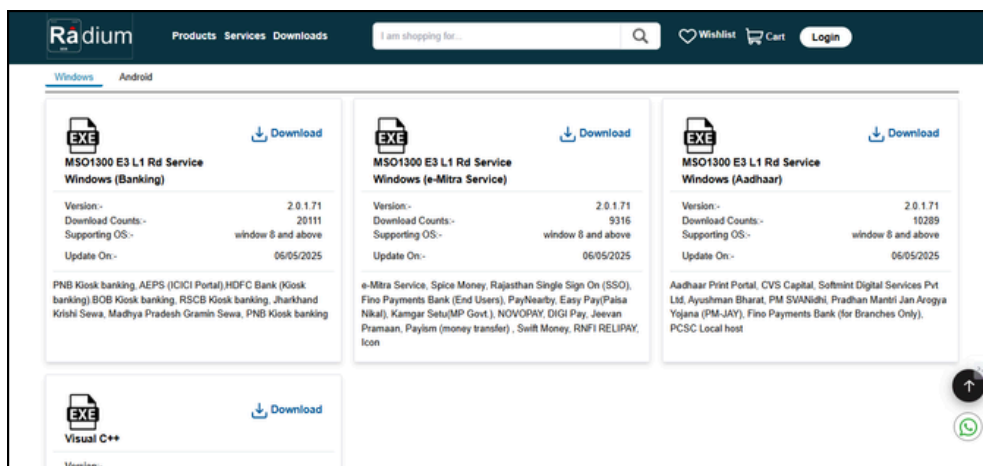
<https://www.radiumbox.com/download>



Step 3: After selecting the Morpho MSO 1300 e3 L1, you will be redirected to a new page where you need to select MSO 1300 e3 L1 to download the driver.



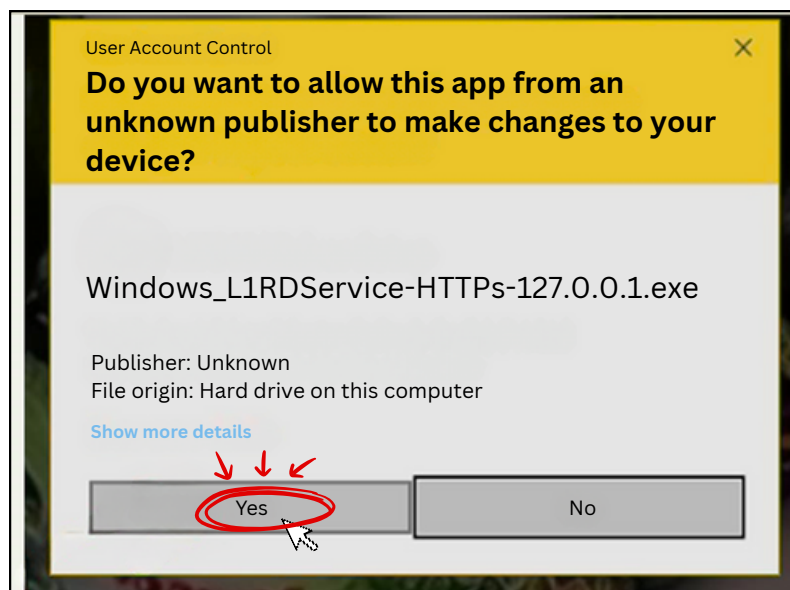
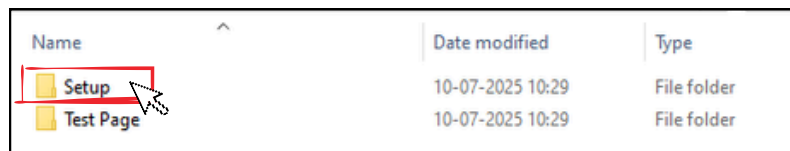
Step 4: After selecting the MSO1300 E3 L1 model you need to choose the driver as per applicable over your portal. The details of integrated portals are mentioned there only.



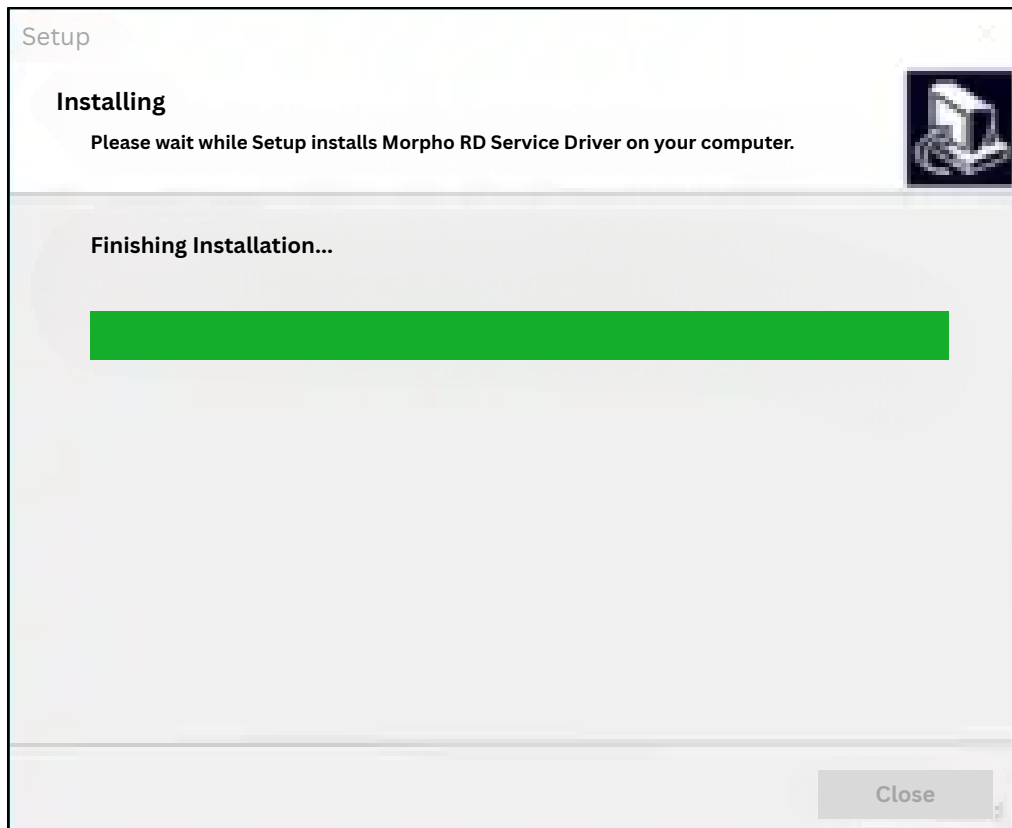
Step 4: After Downloading window driver you will get one zipped file .



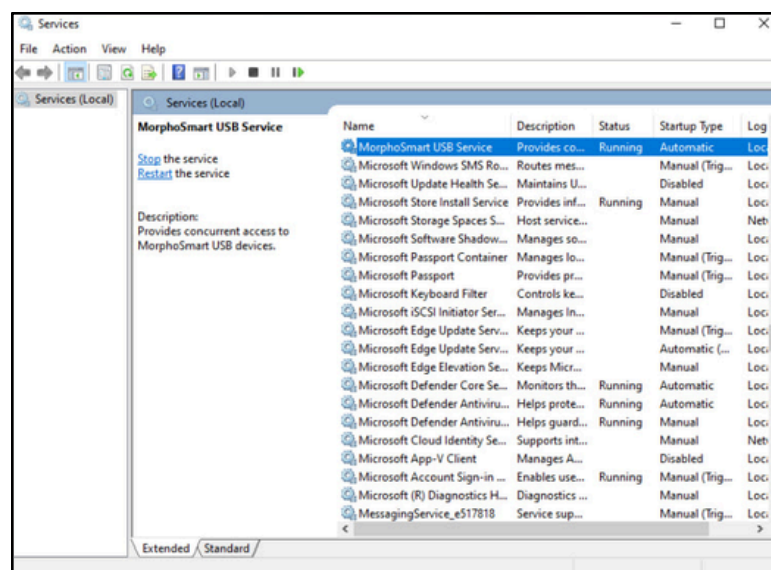
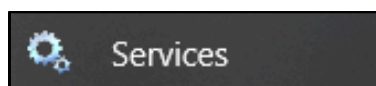
Step 5: You extract that file. Then you need to setup the Driver first



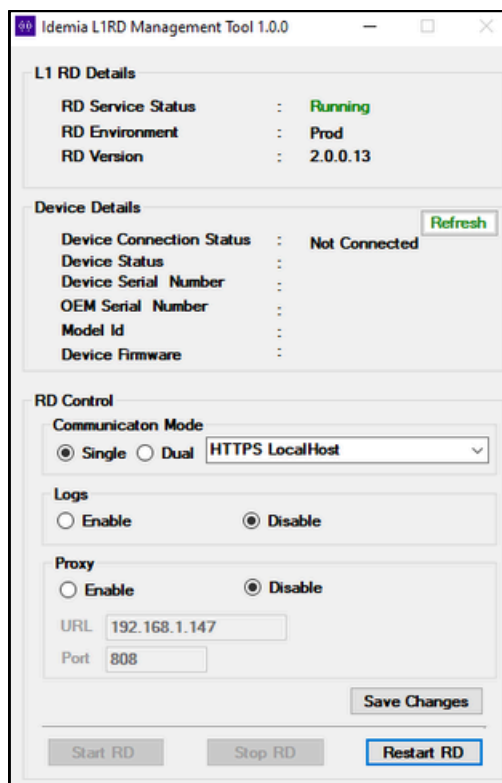
Step 6: Please wait while setup installs Morpho RD Service Driver on your computer.



Step 7: Now you need to go on service in your system and restart MorphoSmart USB Services



Step 8: Now your device is ready to connect.



Now all the software for RD installation are successfully installed over the system, you can restart the services & use in your application

For any technical assistance/enquiry please Contact us -



+91 84343 84343



mail@radiumbox.com

FOR BEST PRICE:



Note: If still issues after processing the above steps, kindly share error screenshot on our whatsapp with order number and device serial number for arranging remote technical support.



IDEMIA
augmented identity

