

Phil Technologies (P) Limited

# Radium Box

**Step by Step Access FM220 L1 Driver Installation  
(Complete Guide | Windows)**



**\*\*For easy RD installation & accessible for common people.**

+91 84343 84343 | [mail@radiumbox.com](mailto:mail@radiumbox.com)  
[radiumbox.com](http://radiumbox.com)

## How To Download Access FM220 L1 Driver Installation?

### What is Access FM220 L1 ?

One of the most secure and popular options for Aadhaar-based fingerprint authentication is the Access FM220U L1 device. It is certified by UIDAI and STQC as appropriate for Aadhaar Authentication. Known for low image distortion, this scanner scans and matches at very fast speeds and supports variable security settings according to different application needs. The Startek FM220U payment device is an L1 fingerprint sensor that provides shapeless image quality with a small model size, making this device very suitable for real-world applications.

Radium Box, Your Trusted Source for Aadhaar-based Solutions, provides the key services and device drivers against this scanner, ensuring smooth verification across different server platforms. When it comes to AADHAAR Authentication, Installation Support for FM220 U L1 device: Radium Box- Startek FM220 scanner You are at the right place to download the latest driver for the startek fm220 L1 driver.

### Requisites for Mantra Drivers :

#### Platform Supports

- Windows 8 (64 bit & 32 bit)
- Windows 10 (64 bit & 32 bit)
- Windows 11 (64 bit & 32 bit)

#### Prerequisites

- Startek FM220 U L1

#### Ensure All Prerequisites are Installed Before Running the Application

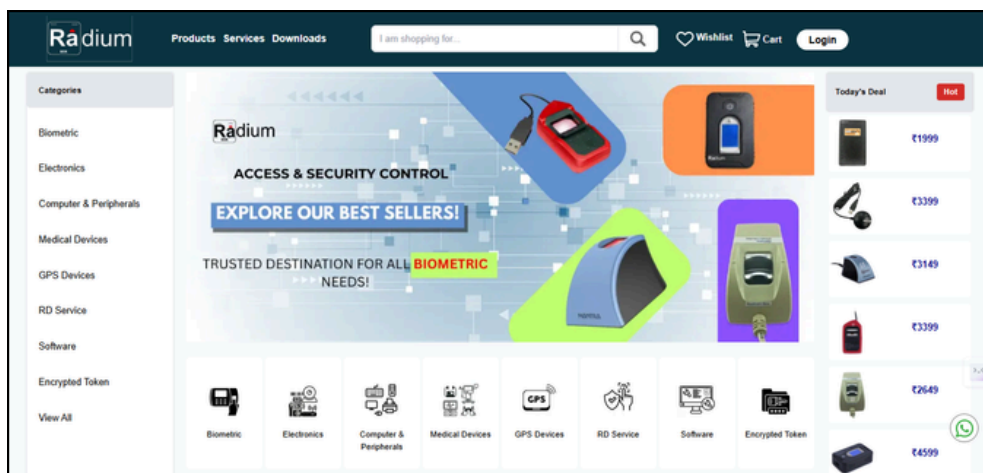
RD service renewal is compulsory before following the below steps , so kindly apply by using below link:

<https://www.radiumbox.com/rd-service/online-register-biometric-device>

## Steps for Downloading Access FM220 L1 for Window:

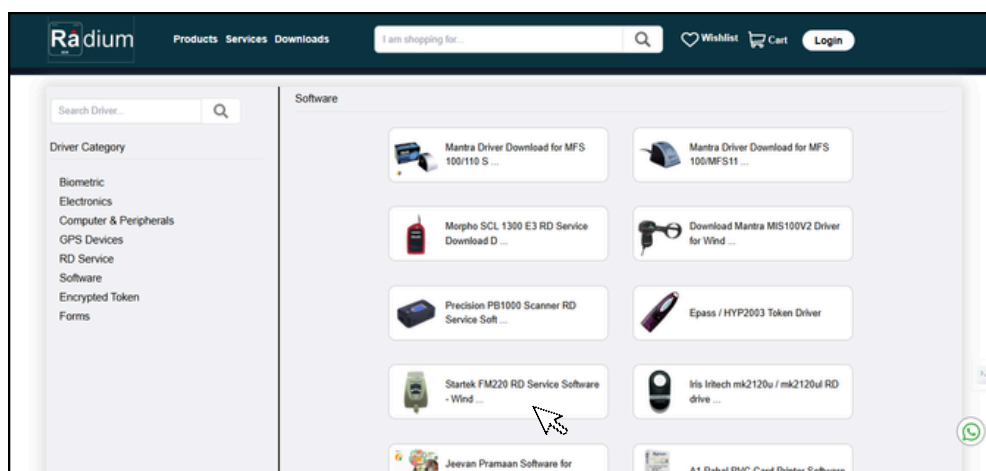
**Step 1:** RD Service setup for Access FM220 L1 is available on our official website. Download Access FM220 L1 Driver by visiting the following link:

<https://www.radiumbox.com/>

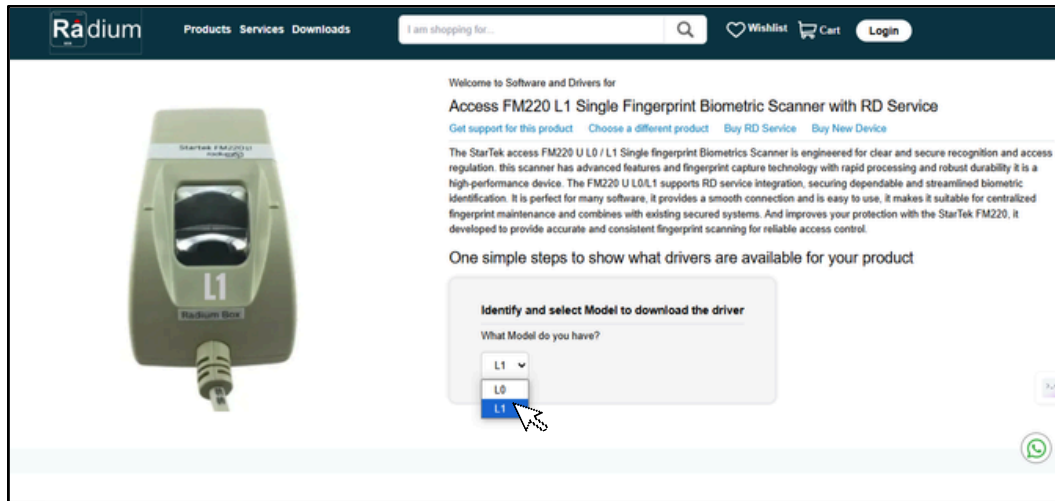


**Step 2:** After visiting our official website, click on the Download option that appears at the top of the home page. In the Download page, click on the Access FM220 L1.

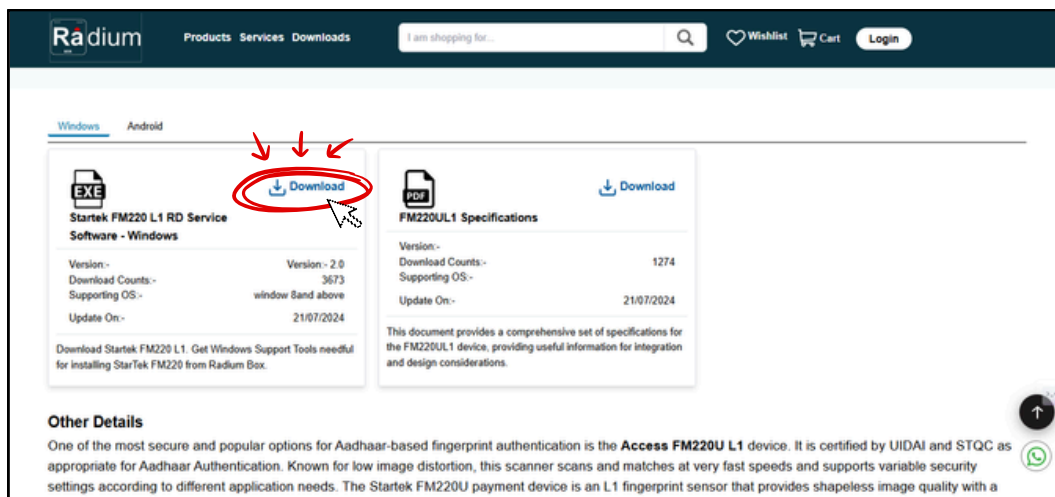
<https://www.radiumbox.com/download>



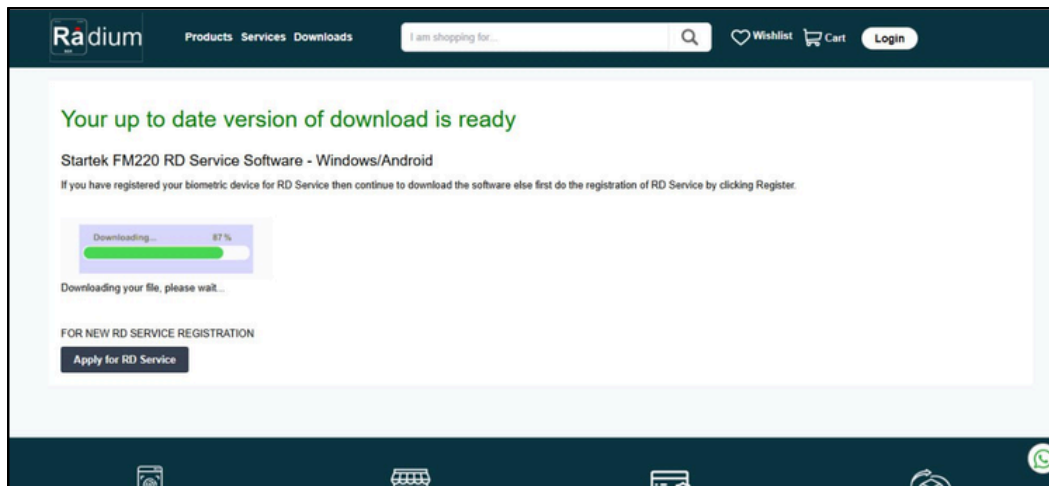
**Step 3:** After selecting the Access FM220 L1, you will be redirected to a new page where you need to select Model L1 to download the driver.



**Step 4:** After selecting the model MFS 110, you need to select Windows where you will have to Download [Startek FM220 L1 RD Service Software - Windows]

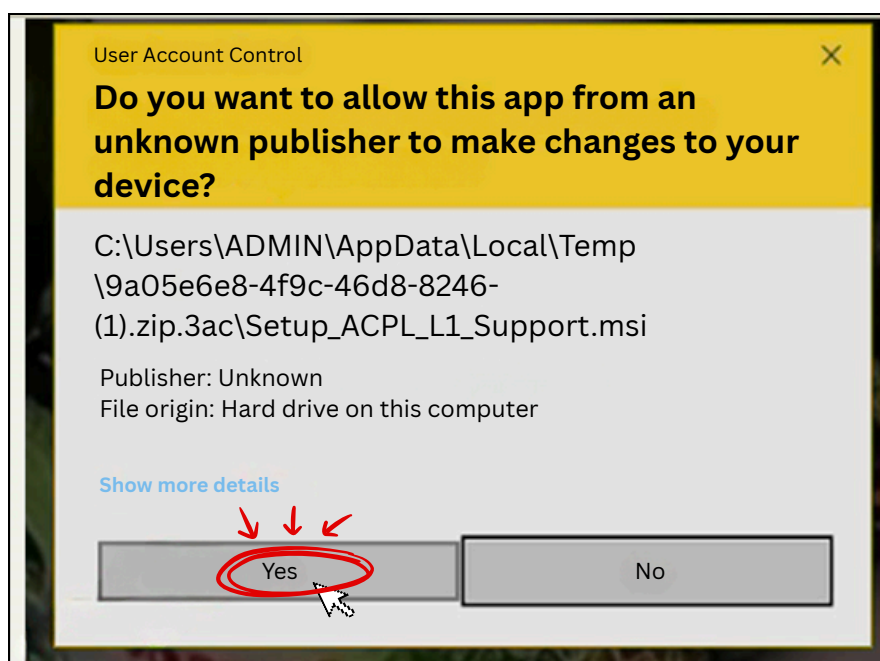


**Step 4:** After Downloading [Startek FM220 L1 RD Service Software - Windows] you will get a zipped file have to extract it which you .

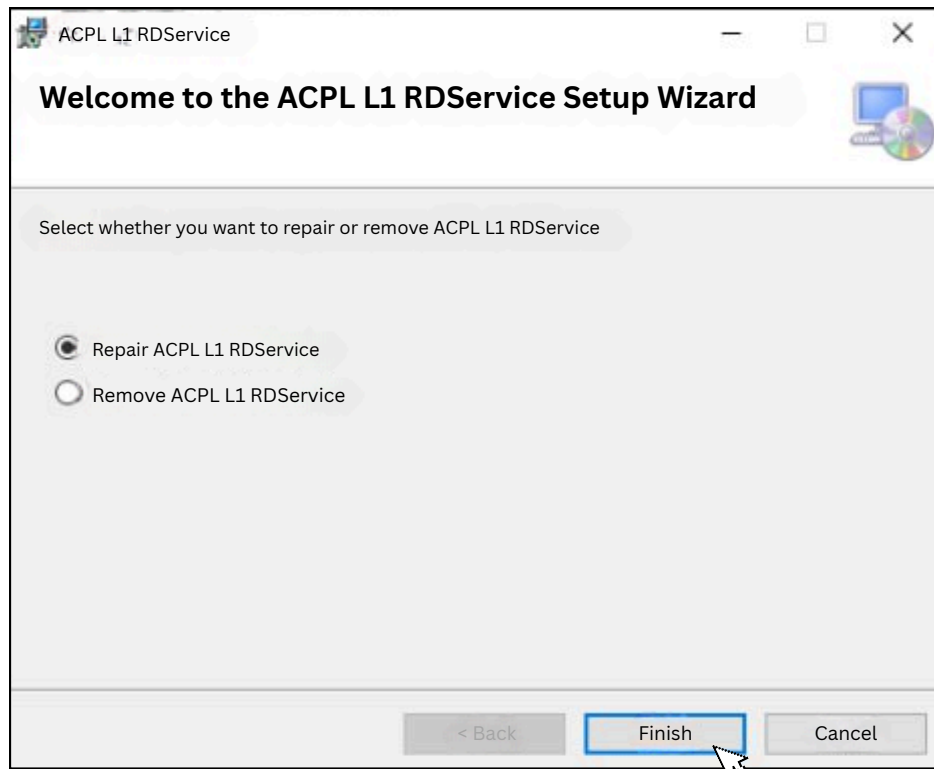


**Step 5:** You need to first install MS110Driver\_2.0.0.0 and Press yes to continue installation.

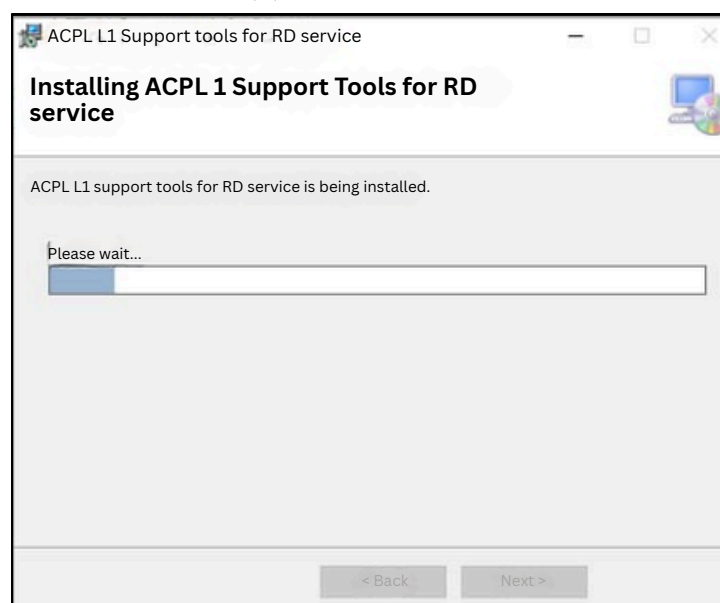
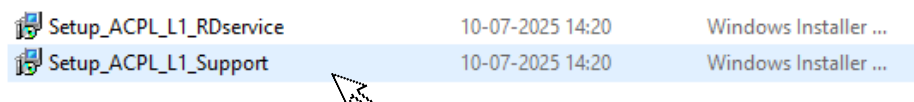
Name	Type	Compressed size	Password ...	Size	Ratio
Setup_ACPL_L1_RDservice	Windows Installer Package	13,485 KB	No	13,937 KB	4%
Setup_ACPL_L1_Support	Windows Installer Package	1,586 KB	No	2,013 KB	22%



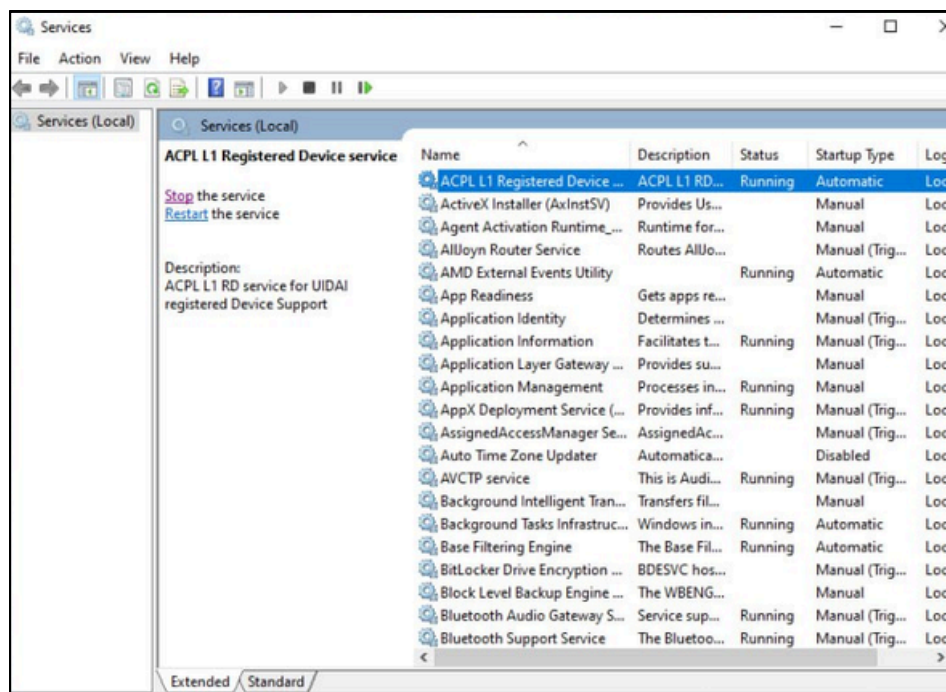
**Step 6:** You need to repair ACPL L1 RDService



**Step 7:** Now you need Setup\_ACPL\_L1\_Support and let tools to be install.



**Step 8 :** Now your Access FM220 L1 Driver setup successfully done.



Now all the software for RD installation are successfully installed over the system, you can restart the services & use in your application

**For any technical assistance/enquiry please Contact us -**

📞 | 📱 +91 84343 84343  
✉️ mail@radiumbox.com

**FOR BEST PRICE:**



Note: If still issues after processing the above steps, kindly share error screenshot on our whatsapp with order number and device serial number for arranging remote technical support.