

# Secugen Biometric Device Drivers Help File

---

## INDEX

1) Windows Configuration

2) Uninstalltion of Default Drivers

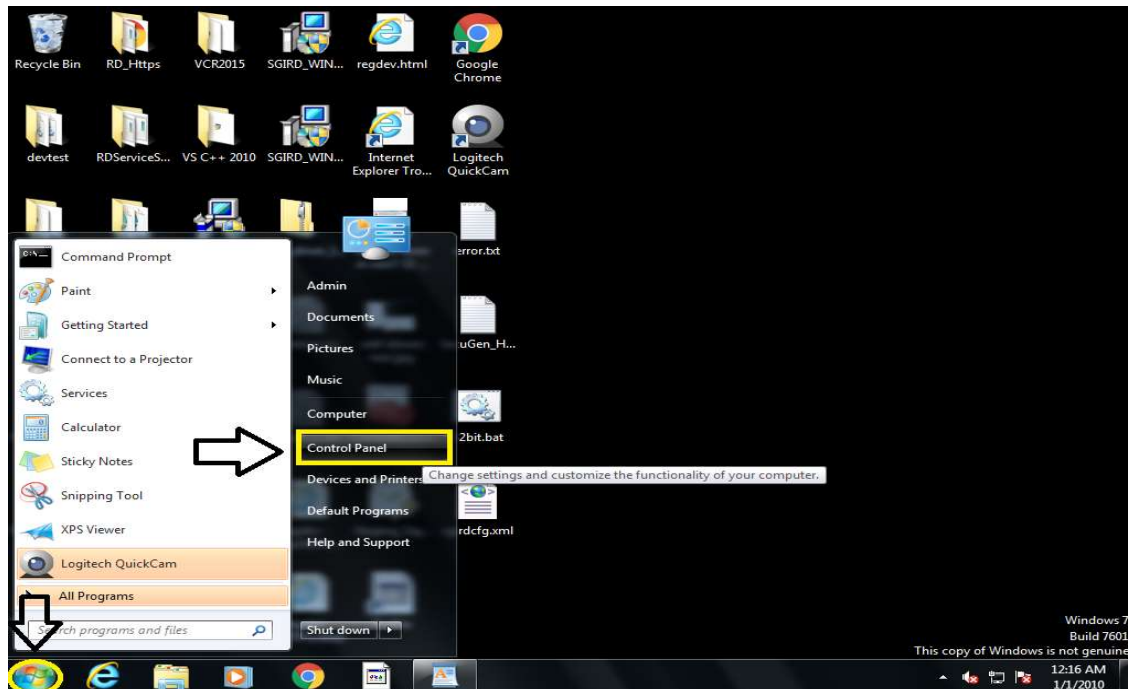
3) Installation Process

# 1.Windows Configuration

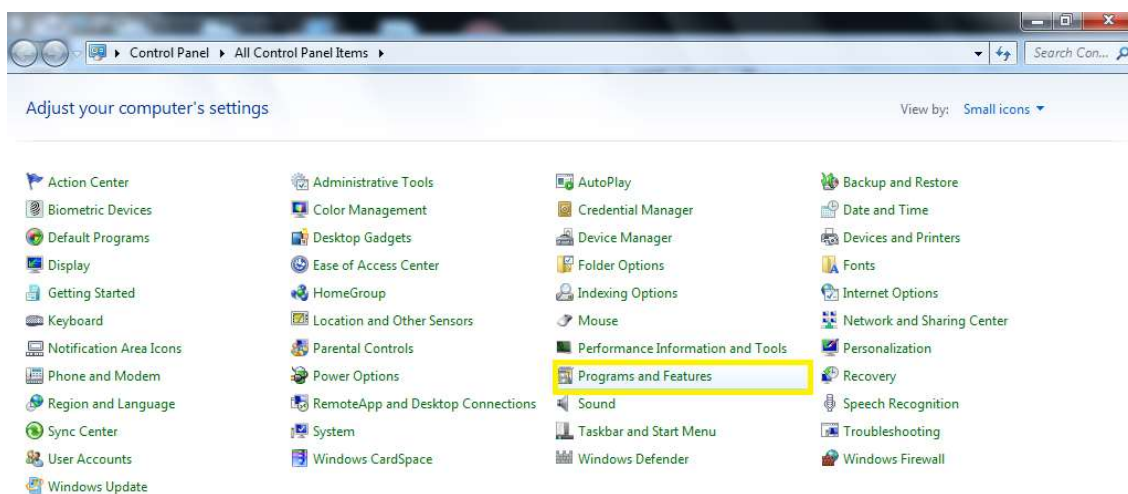
- **Do not connect Biometric Device first. If Connected Remove the Device**

**Please note You need to use Windows 7 SP1(Service Pack 1) or Later Version for Secugen Device**

- Select the Start Window & Click on “Control Panel”

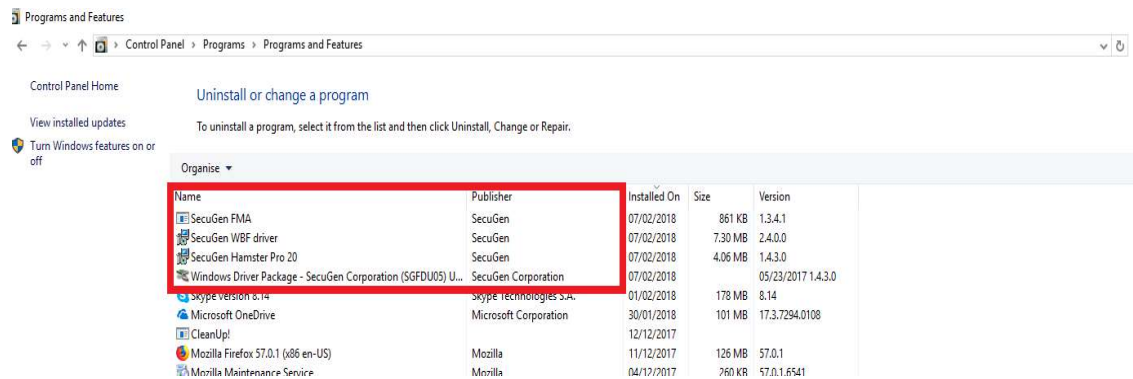


- In Control Panel Click on “Program & features” or you will see Uninstall a Program .



- Uninstall all the Program with Secugen Name Like **Secugen WBF, Secugen FMA, Secugen Hamster Pro 20** etc

➤ **Note : Do not Uninstall Secugen RD Service & Secugen WEB API**

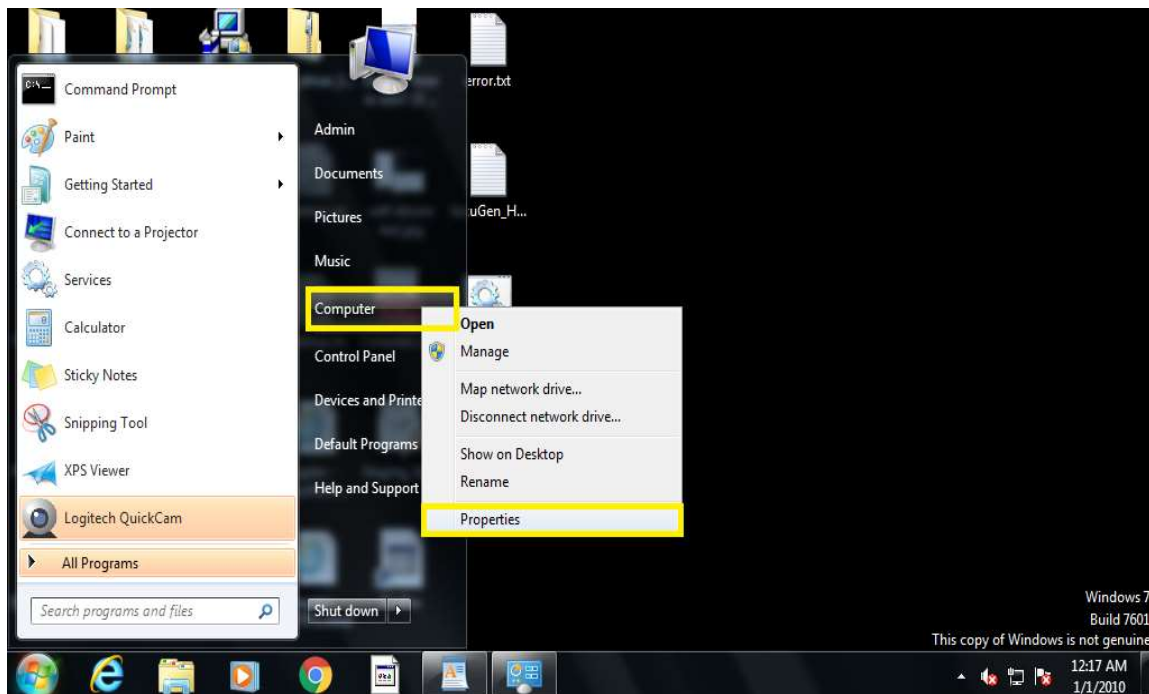


**IMP Note: Follow the below steps only if using Windows 7 OS System. If using Windows 8 or higher version go directly go to Universal legacy device drivers steps @ Page 7**

- Select Start Window then move your mouse to **“computer”** & right click on it , then go to **“properties”**

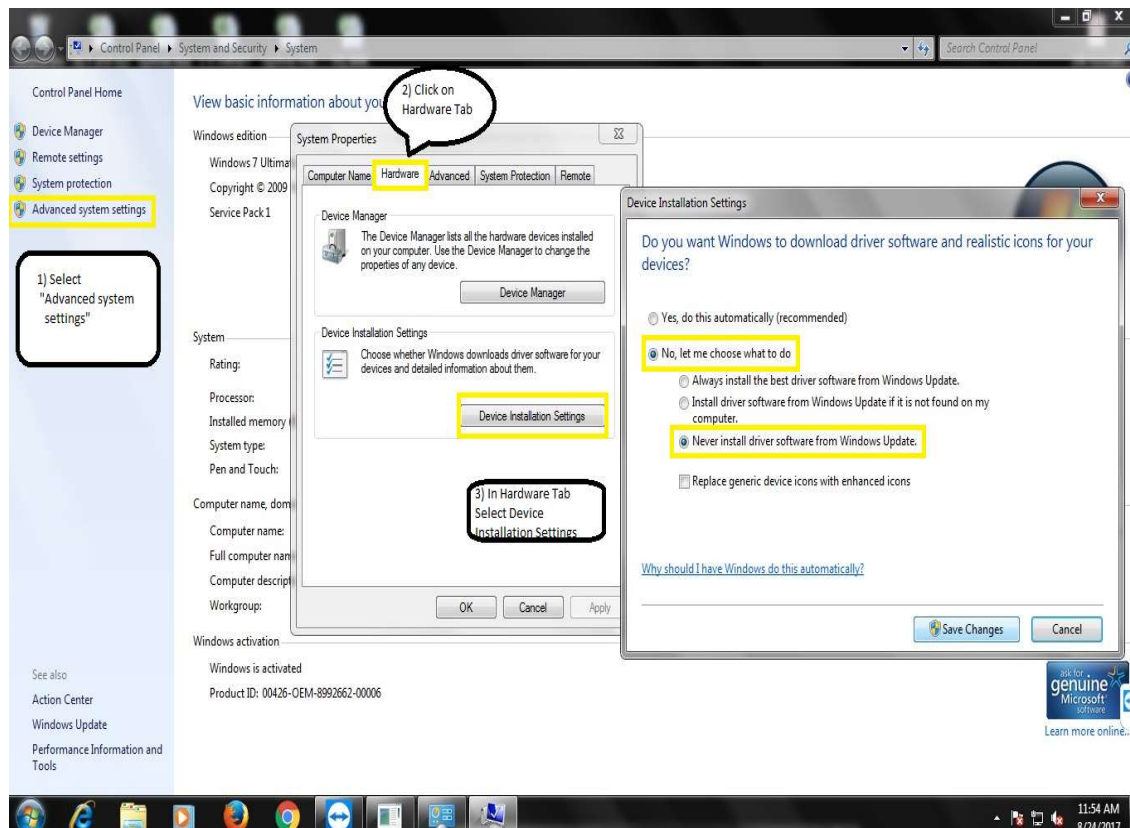
**OR**

- On Desktop you will see Computer Icon Select & Right click on it & go to properties

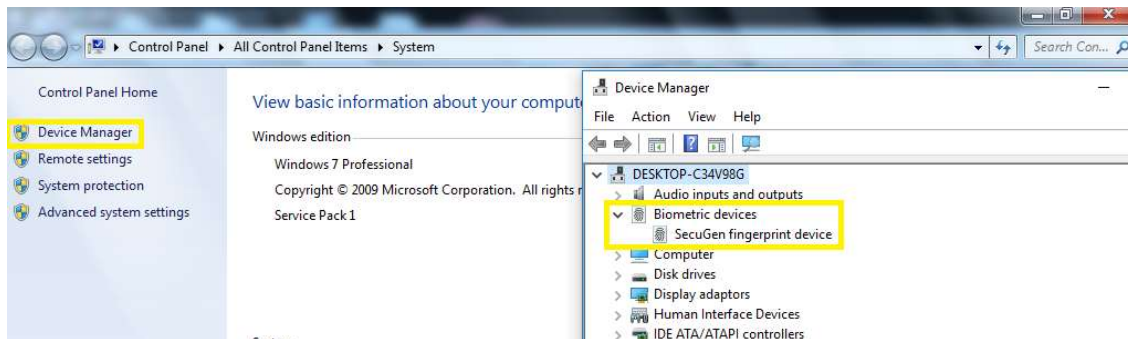


- In **"System"** (After Clicking on Properties SYSTEM Tab will be opened)
- Select 1) **"Advanced System Setting"** then
  - Click on 2) **"Hardware"** Tab then
  - Select 3) **"Device installation Setting"**.
  - You will get 2 options Select **"No let me choose what to do"**
  - Then in below 3 options Always Select **"Never install driver software from windows update"**
  - Click on **"Save Changes"** .

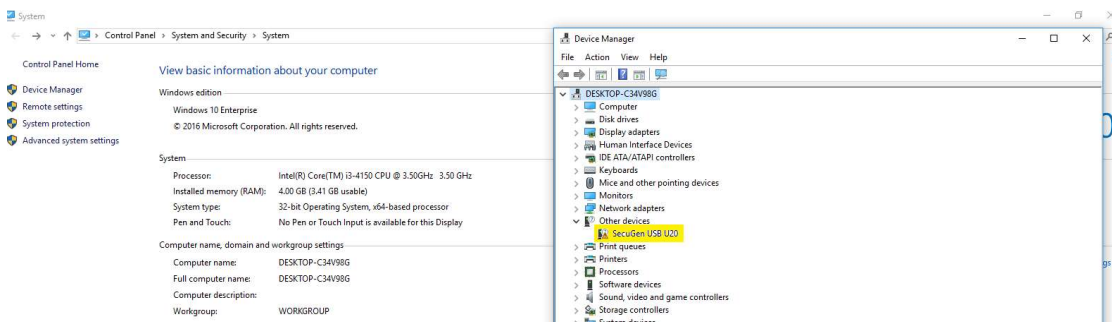
**Note :** Please use the below image for above steps .



- Now Connect your Biometric Device & In System Select Device Manager then See connected Biometric devices .
- ❖ If Biometric Device Shows “Secugen Fingerprint Device” OR “SecuGen USB U20 FRD” Follow the un installation Process



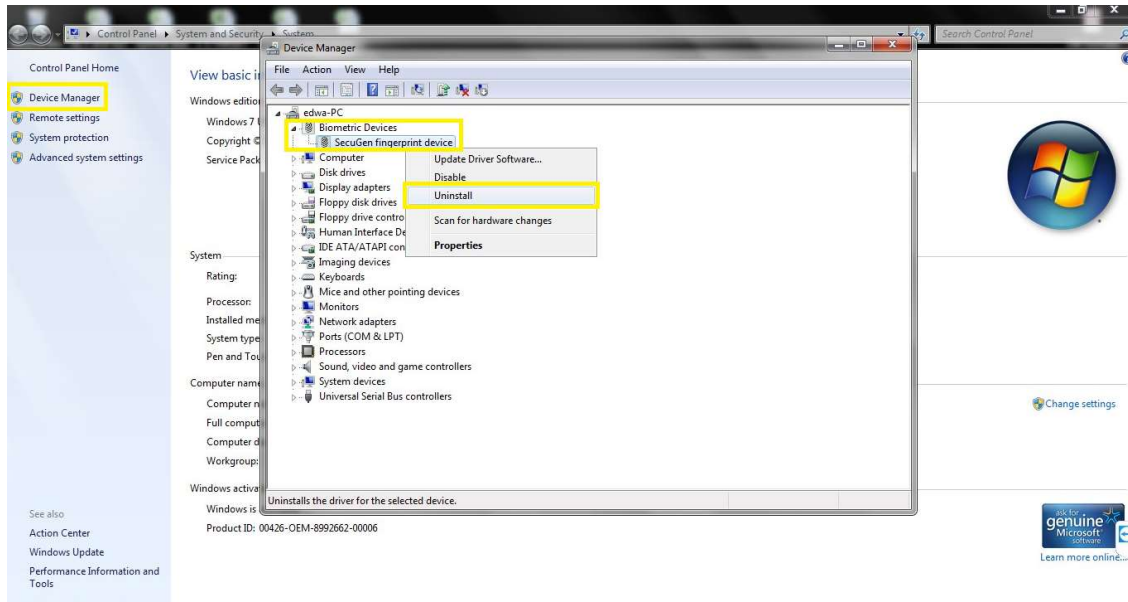
- ❖ If Biometric Device Shows In Other Device as “Secugen USB U20” or “unknown device” then Install Drivers



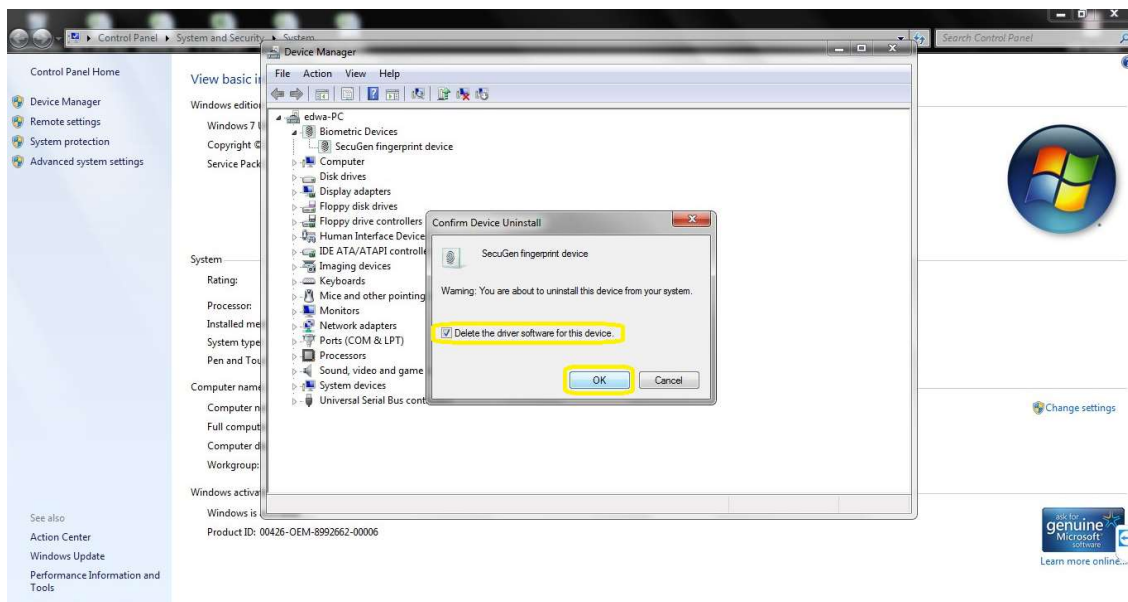
**IMPORTANT :** IF YOU CONNECT BIOMETRIC DEVICE TO YOUR SYSTEM RED LIGHT SHOULD BLINK ON THE SENSOR , IF NOT PLEASE MAIL TO [support@secugenindia.com](mailto:support@secugenindia.com)

## 2.Uninstalltion of Default Drivers

- In “Device Manager” Expand Biometric Device then Right Click on “Secugen fingerprint device” OR “SecuGen USB U20 FRD” & Click on Uninstall Device.



- Click on the check mark “Delete the drivers software for these device” then select Uninstall



- Then Disconnect the Biometric Device from your machine & Restart your machine .
- After Restarting your machine Connect your Biometric device & follow the installation Process

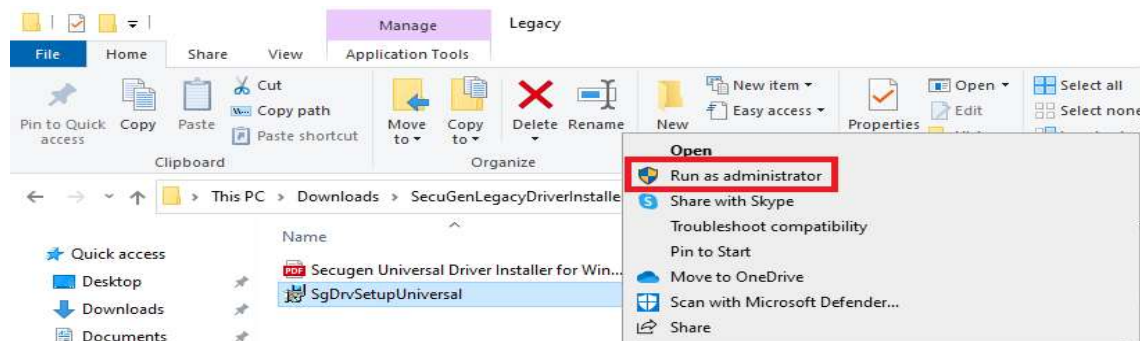


### 3. Universal Legacy Device Drivers Installation Steps

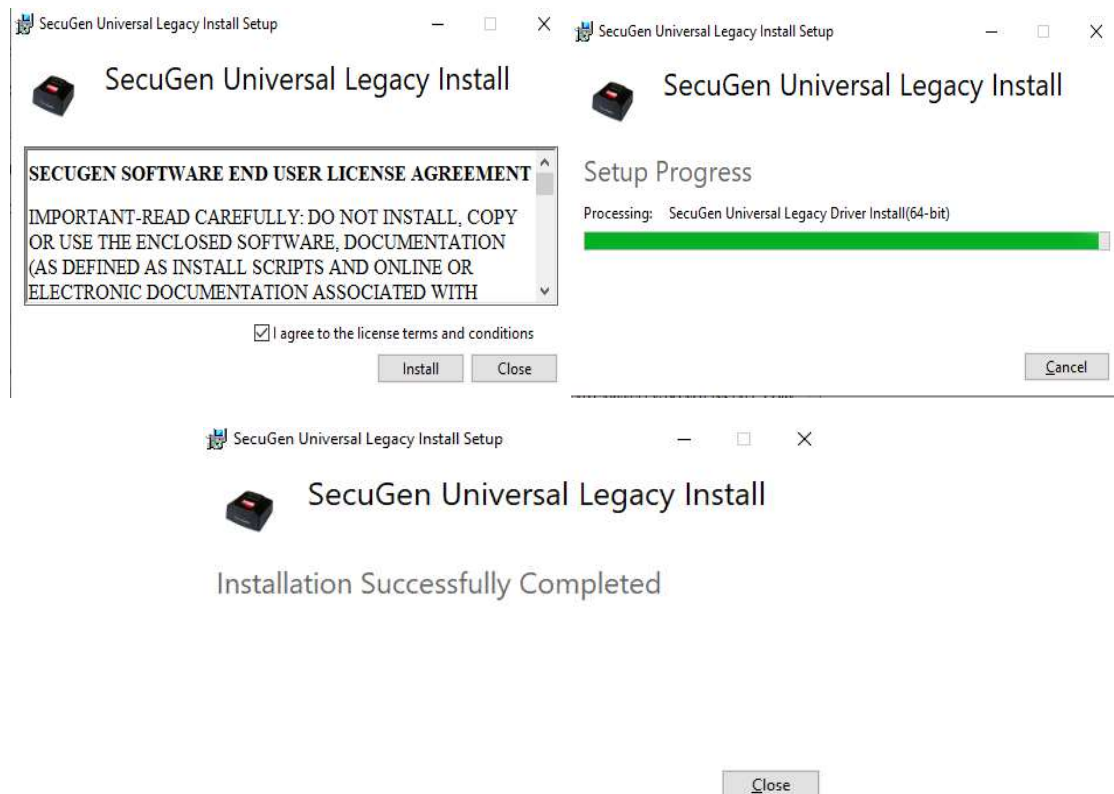
Go to <https://secugen.com/drivers/> website In **Legacy Drivers** Click on “**SecuGen Legacy Drivers Installer**”

Download & Extract the **SecuGenLegacyDriverInstaller\_\*\*.zip** File

Run the Setup file **SgDrvSetupUniversal.exe** with administrator



Tick mark on Licensee Term & conditions then select Install wait for few minutes It Will Install SecuGen Universal legacy drivers



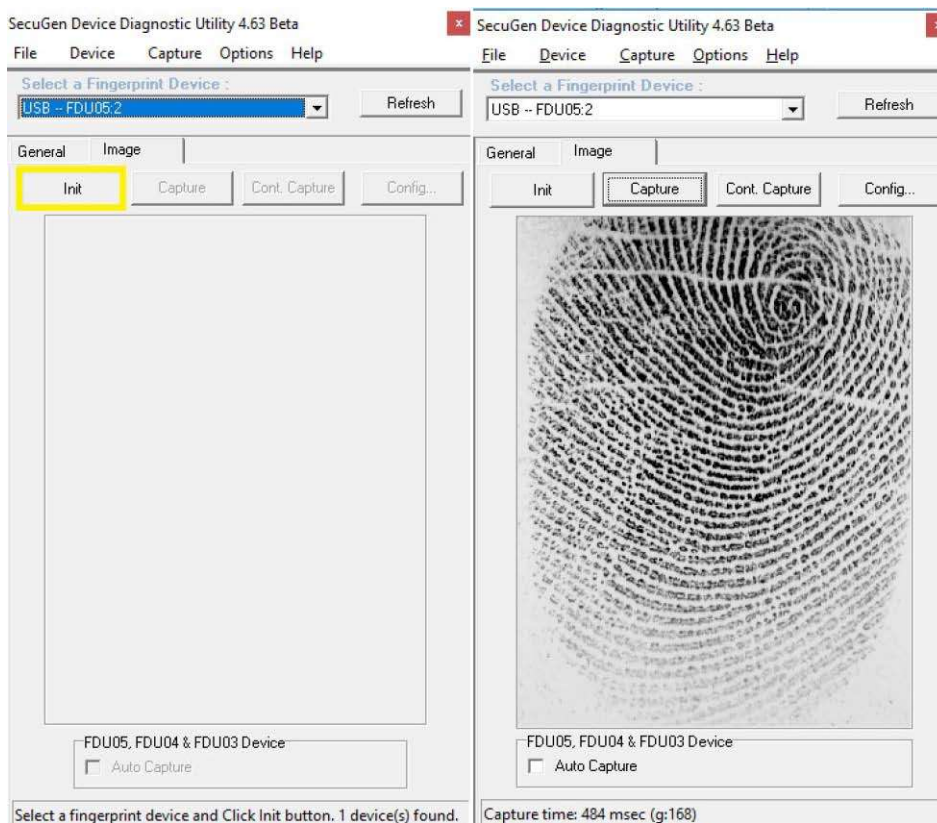
In Device Manager You will be able to see the drivers are loaded in **Fingerprint Devices**

## Test Finger print capture

- To Check the Fingerprint Capture Open the sgdx\_v504.exe Utility which you can get in SecuGenLegacyDriverInstaller\_21 File

➤ Secugen_Device_Drivers_and_Softwares_new ➤ SecuGenLegacyDriverInstaller_21 ➤ SecuGenLegacyDriverInstaller_21			
Name	Date modified	Type	Size
 Biometric_Device_Driver_Help_File_for_H...	4/7/2022 8:52 AM	Adobe Acrobat D...	1,523 KB
 SgDrvSetupUniversal.exe	3/10/2022 4:47 PM	Application	21,952 KB
 sgdx_v504.exe	3/21/2022 12:07 PM	Application	2,909 KB

- Click on Init (i.e it will initialize Biometric Device for Capture) Now place your finger on Biometric Device & Click on Capture , It will give you Finger print image .



- To Capture multiple times Select Continuous capture or Auto capture features .